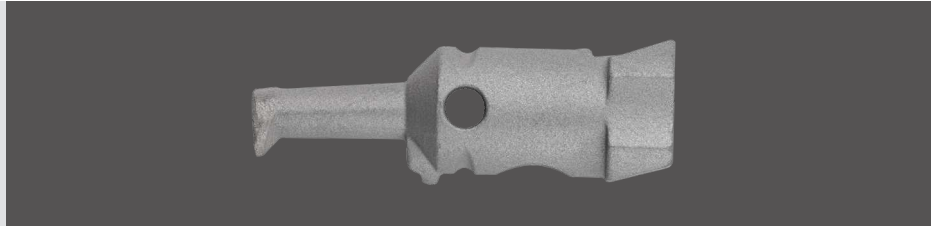
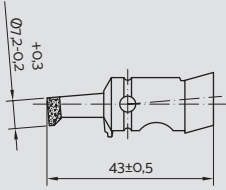


DIAMOND TIPPED FAÇADE DRILL BIT



Product information

- ▶ The KEIL façade drill bit is available in various designs matching the KEIL undercut anchor.
- ▶ We offer diamond or carbide tipped façade drill bits, which are used depending on the panel material to be drilled.
- ▶ Optimized, small diameters with large undercutting cause minimization of the drilling time and maximization of the tool life.
- ▶ The KEIL drilling technique warrants optimally short drilling times, long tool life and precise drill hole geometry.
- ▶ The KEIL façade drill bit is inserted into the KEIL chuck.

$h_s =$ insertion depth [mm]	drill hole \varnothing cylindrical [mm]	drill hole \varnothing undercut [mm]	height undercut [mm]	type	article no.
≤ 13	7	9	0.8	1	515 010 022
≤ 15	7	9	1.3	2	515 017 022

Application

- ▶ Diamond tipped
- ▶ Wet drilling
- ▶ For all "hard" materials, e.g.
 - ▶ Ceramics
 - ▶ Porcelaine stoneware
 - ▶ Natural stone
 - ▶ Glass
 - ▶ Artificial stone
- ▶ Central cooling through the façade drill bit.

Accessories

- ▶ Fastener set 1 (p. 53)
- ▶ Fastener set 2 (p. 53)
- ▶ Fastener set 3 (p. 53)
- ▶ Depth control guide (p. 56)
- ▶ Whetstones (p. 51)

Design



Diamond tipped façade drill bit

Instructions for use

- ▶ Use according to approval and KEIL assembly instructions for anchors (p. 12). Please find documents with relevance to building regulations under www.keil-fixing.de/en/approvals.
- ▶ Adjust the insertion depth and monitor the life time of the façade drill bit with the aid of the depth control guide.
- ▶ For KEIL chucks / undercut drilling machines.
- ▶ Recommended rotational speed > 7,000 rpm.
- ▶ Water pressure > 4 bar
- ▶ Usage of the cooling lubricant 532 500 035 (p. 49) will prolong the life time of the diamond tipped façade drill bit significantly and protect the parts covered in cooling water from corrosion.

Packaging unit

- ▶ Packaging unit = 2 pieces.

Residential building, Frankfurt, DE © Rathscheck Schiefer

