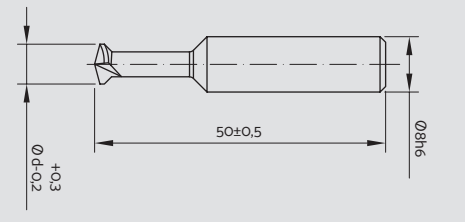


FAÇADE DRILL BIT HM CNC



h_s = insertion depth [mm]	d = drill hole ∅ cylindrical [mm]	drill hole ∅ undercut [mm]	height undercut [mm]	drill shaft ∅ [mm]	variant	article no.
≤ 13	7	9	0.8	8	2 cutters for CNC	517 020 005

Application

- ▶ For façade panels from e.g.
 - ▶ Fibre cement
 - ▶ Laminate (HPL)
 - ▶ Synthetic materials
 - ▶ Specified artificial and natural stones
 - ▶ Solid surface materials

Accessories

- ▶ Depth control guide (p. 56)

Design



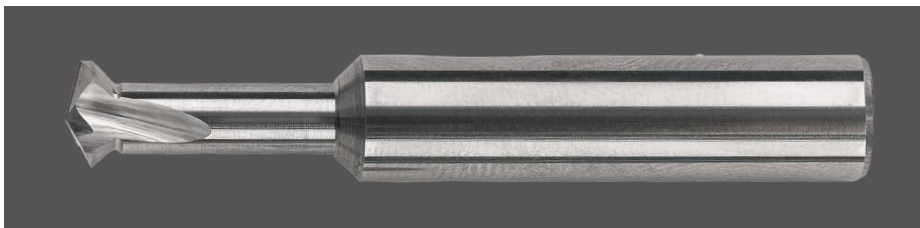
Undercut façade drill bit with soldered in carbide blade and cylindrical shaft

Instructions for use

- ▶ Use according to approval and KEIL assembly instructions for anchors (p. 12). Please find documents with relevance to building regulations under www.keil-fixing.de/en/approvals.
- ▶ Adjust the insertion depth and monitor the life time of the façade drill bit with the aid of the depth control guide.
- ▶ For CNC machines.

Product information

- ▶ The KEIL façade drill bit is available in various designs matching the KEIL undercut anchor.
- ▶ We offer diamond or carbide tipped façade drill bits, which are used depending on the panel material to be drilled.
- ▶ Optimized, small diameters with large undercutting cause minimization of the drilling time and maximization of the tool life.
- ▶ The KEIL drilling technique warrants optimally short drilling times, long tool life and precise drill hole geometry.



h_s = Insertion depth [mm]	d = drill hole ∅ cylindrical [mm]	drill hole ∅ undercut [mm]	height undercut [mm]	drill- shaft ∅ [mm]	variant	article no.
≤ 13	7	9	0.8	8	2 cutters	517 020 002
≤ 13	7	9	0.8	8	3 cutters	517 020 001
≤ 13	8	10	0.8	8	2 cutters square anchor	517 020 003

Application

see above

Accessories

see above

Design



Full carbide undercut façade drill with cylindrical shaft

Instructions for use

see above

Silex 1, Lyon, FR © Kevin Dolmaire, AIA Architectes / Corian® Façade

